

boot.ipx config

```
GNU nano 4.8 /var/www/html/winpe/boot.ipxe
#!ipxe
cpuid --ext 29 && set arch amd64 || set arch x86
set netX/gateway 10.10.10.1
#sanhook iscsi:iqn.win-http:client-001-http
kernel wimboot
initrd ${arch}/media/bootmgr bootmgr
initrd ${arch}/media/Boot/BCD BCD
initrd ${arch}/media/Boot/boot.sdi boot.sdi
initrd ${arch}/media/sources/boot.wim boot.wim
boot
```

install.ipxe config

```
GNU nano 4.8 /var/www/html/winpe/install.ipxe
#!ipxe
prompt -k 0x197e -t 5000 Press F12 to install Windows... || exit
chain boot.ipxe
```

isc-dhcp-config Co ja robię źle

```
host win-mother2{
  next-server 10.10.10.10;
  hardware ethernet 00:15:5D:00:7C:78;
  if exists user-class and option user-class = "iPXE"{
    filename "http://10.10.10.10/winpe/install.ipxe";
    option root-path "iscsi:10.10.10.10:::1:iqn.win-http:client-001-http";
  } else {
    filename "undionly.kpxe";
  }
}
#host mother Linux
```

tgt config

```
#windows via http

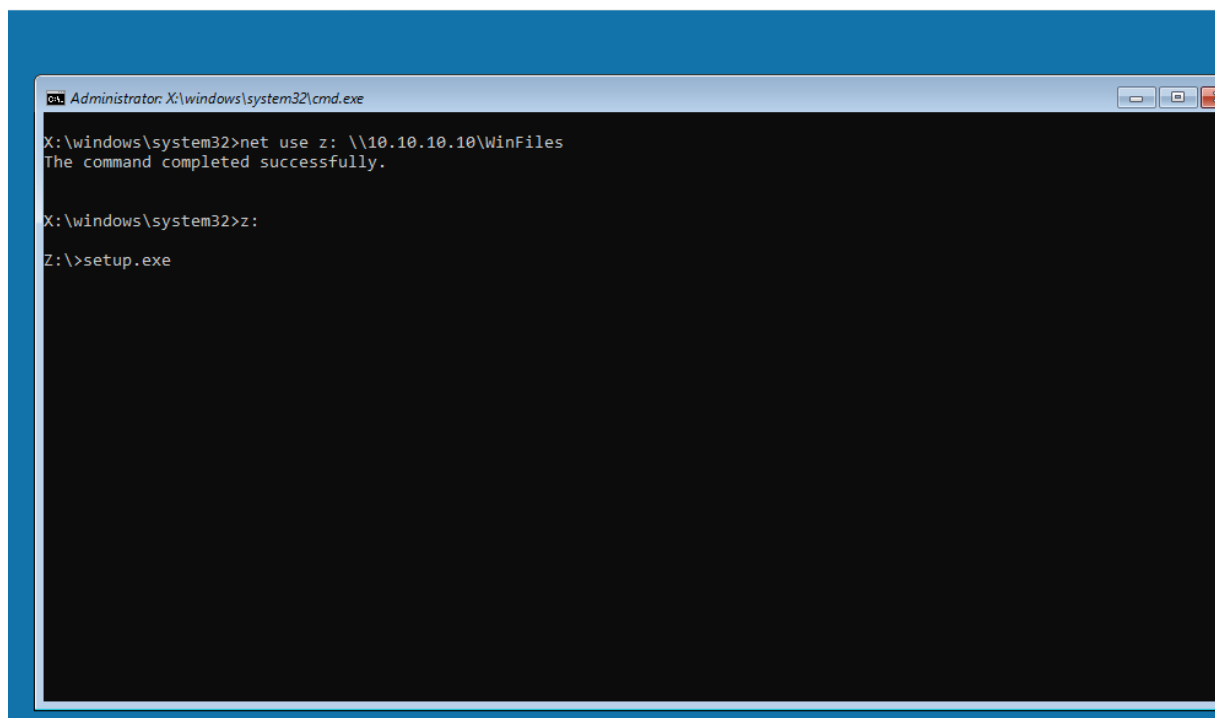
<target iqn.win-http:client-002-http>
  backing-store /dev/Windows/client-windows-002
# incominguser user password1234
</target>
```

iPXE boot

```
iPXE 1.21.1+ (ga2a6) -- Open Source Network Boot Firmware -- http://ipxe.org
Features: DNS HTTP iSCSI TFTP AoE ELF MBOOT PXE bzImage Menu PXEXT

net0: 00:15:5d:00:7c:78 using undionly on 0000:00:0a.0 (open)
  [Link:up, TX:0 TXE:1 RX:0 RXE:0]
  [TXE: 1 x "Network unreachable (http://ipxe.org/28086011)"]
Configuring (net0 00:15:5d:00:7c:78)..... ok
net0: 10.10.10.28/255.255.255.0 gw 10.10.10.1
Next server: 10.10.10.10
Filename: http://10.10.10.10/winpe/install.ipxe
Root path: iscsi:10.10.10.10:::1:iqn.win-http:client-002-http
Registered SAN device 0x80
http://10.10.10.10/winpe/install.ipxe... ok
install.ipxe : 89 bytes [script]
boot.ipxe... ok
winboot... ok
amd64/media/bootmgr... ok
amd64/media/Boot/BCD... ok
amd64/media/Boot/boot.sdi... ok
amd64/media/sources/boot.wim... 36%
```

Net use

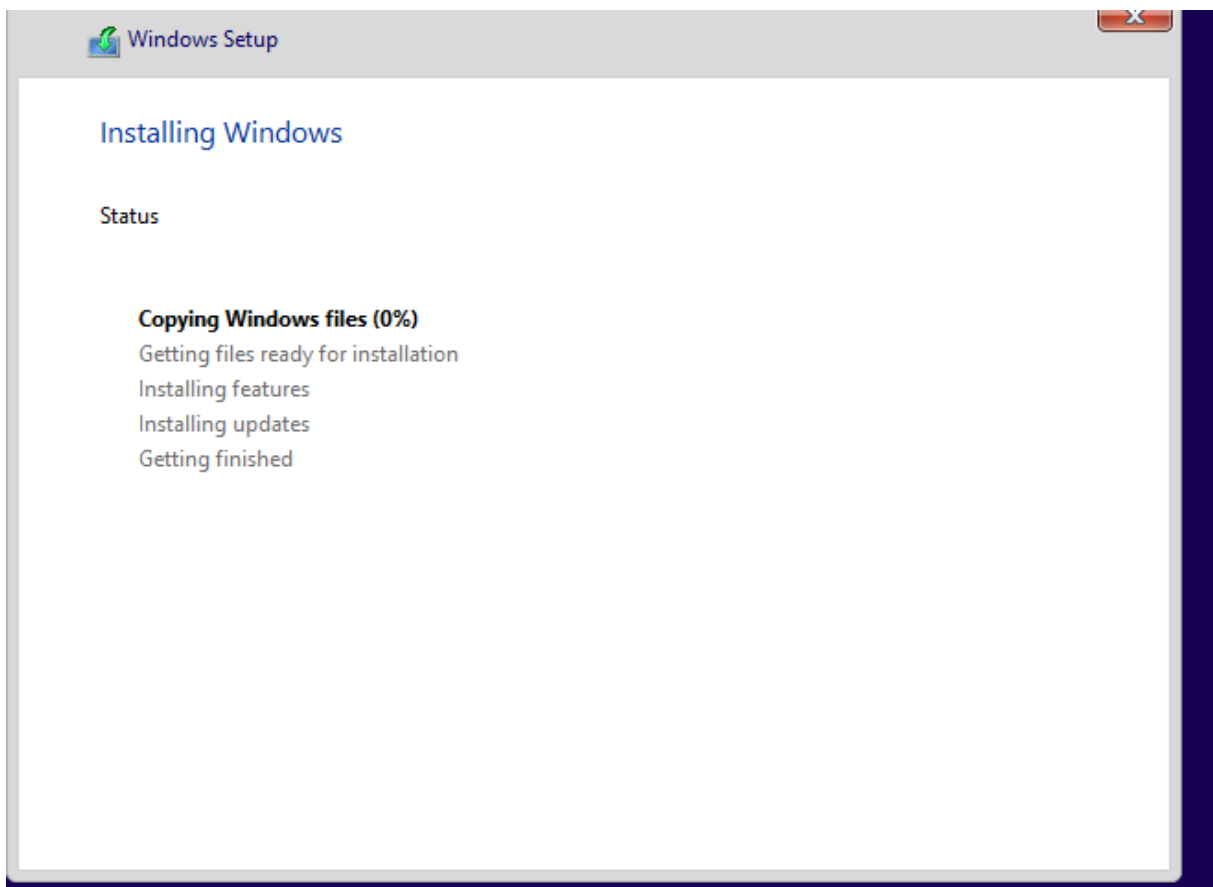
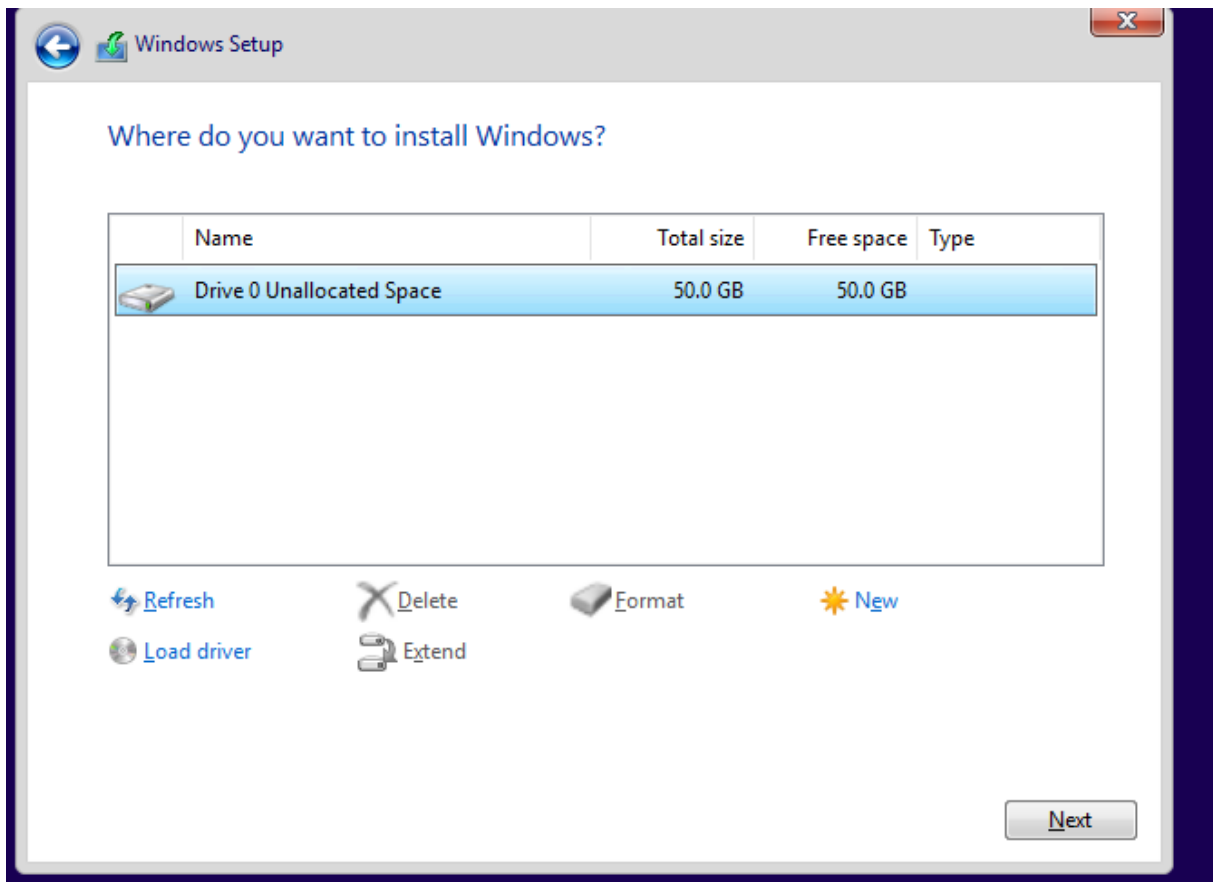


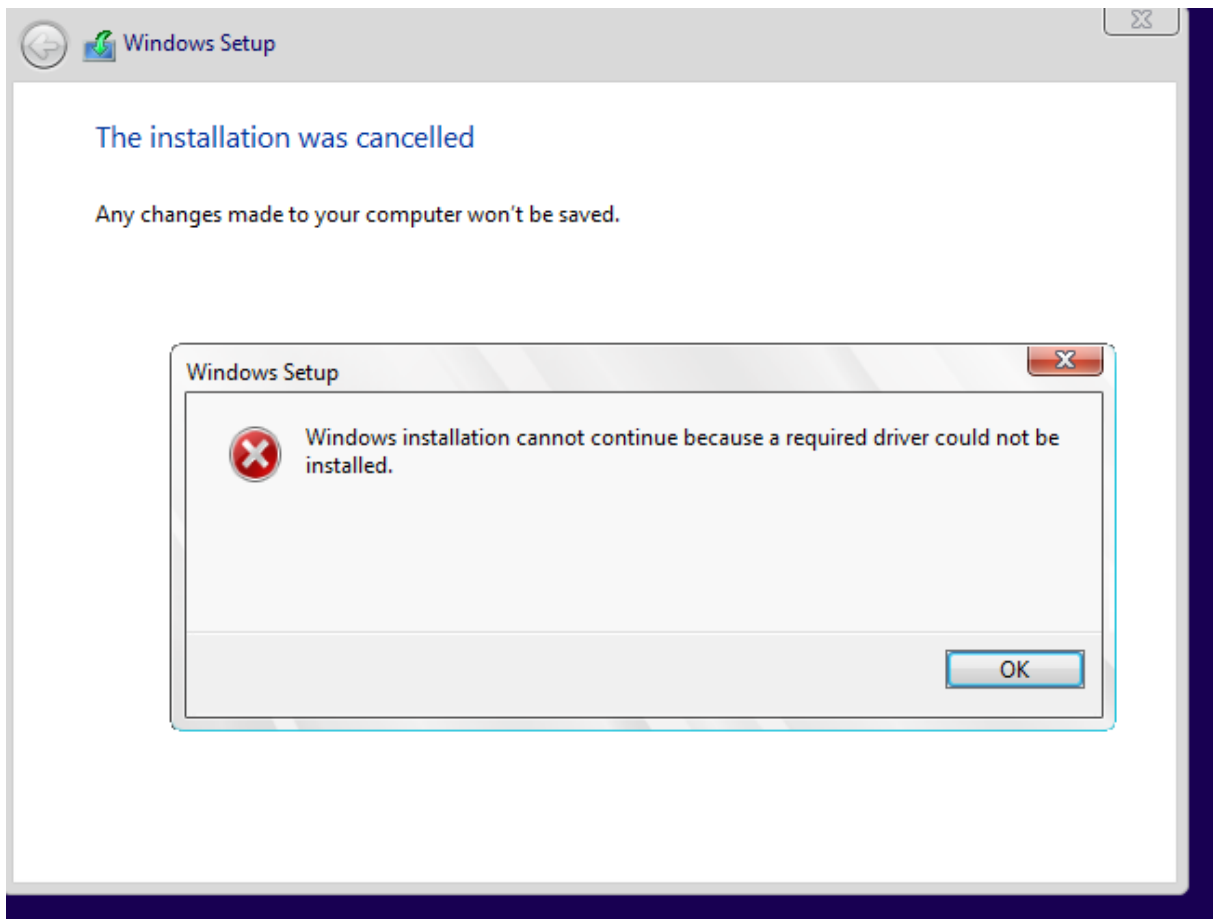
```
Administrator: X:\windows\system32\cmd.exe

X:\windows\system32>net use z: \\10.10.10.10\WinFiles
The command completed successfully.

X:\windows\system32>z:
Z:\>setup.exe
```

installing windows 10 profesional





installing windows 10 profesional don't works

windows 10 enterprise LTSC 2019 work,